



Skills that Work



Leaders Path

↑ *Where ambition meets direction* ↑

Sustainability | Artificial Intelligence | Supply Chain



**The world's most in-demand skills
right now are Sustainability, Artificial
Intelligence, and Supply Chain
Leaders Path puts all three at
your fingertips !**



**Your next promotion, breakthrough,
and success story all start with one
decision - invest in Yourself today
with Leaders Path !**

INDEX



About Us	02
The Leap Philosophy.....	03
Our Domains	04
Our Courses Are For	05
The Learning Experience	06-07
Course Outline	08-26
The People Behind Our Courses	27
Methodology And Assessment	28
Beyond Online Learning	29
Certificate Of Completion	30
Being Part Of The Leap Community	31
The Leader's Path Advantage	32

About us ...

Leaders Path is a global learning platform built for the bold - the **thinkers who question**, the **doers who act**, and the **changemakers** who refuse to leave the world the way they found it.

Leadership isn't a title you're handed, it's a **mindset you build** — deliberately, consistently, and with the right guidance. That's exactly what we do.

Our platform fuses **deep industry expertise** with **immersive digital learning** and **real-world case experiences**, closing the gap between what you studied and **what the world actually demands of you**.

From **early-career professionals** finding their footing, to **mid-level managers** stepping into bigger roles, to **senior leaders** shaping entire industries — Leaders Path meets you **exactly where you are** and takes you further than you imagined.

In partnership with **leading universities** and **industry pioneers**, we aim to deliver **future-ready education** in **Sustainability, Artificial Intelligence and Supply Chain**—the three forces redefining how the world works.

This isn't just learning. This is your leadership, activated.



**"Real learning does not end when a program does.
It shows up in the decisions you make long after."**

The LEAP Philosophy

Leaders Path is built around four principles that shape how our courses are designed, how our learners are assessed, and how the community grows together.

L

Lead with Purpose: Developing values-driven thinking grounded in real-world responsibility.

E

Excel with Skill: Building practical, job-relevant capabilities aligned with industry needs.

A

Aspire without Limits: Encouraging ambitious thinking and global perspectives .

P

Progress with Impact: Translating learning into measurable outcomes for careers and organisations.



Our Domains

Sustainability

Sustainability has moved from a corporate responsibility conversation into the core of how organisations are regulated, evaluated, and held accountable. Our Sustainability courses are designed for professionals who need to engage with this shift seriously — not just understand what ESG means, but know how to apply frameworks, interpret disclosure requirements, account for carbon, and navigate the regulatory landscape. The learning draws on both academic rigour and industry practice, covering everything from climate science and the circular economy to stakeholder capitalism and assurance readiness.

Artificial Intelligence

Artificial Intelligence (AI) is changing how decisions get made, how work gets done, and what organisations expect from the people who lead them. Our AI courses are built around that reality. The focus is not on technical fluency for its own sake — it is on developing the judgment professionals need when working with AI systems: interpreting outputs, governing their use, and communicating findings to people who need to act on them. From understanding how systems work to applying decision intelligence in complex business contexts, the learning is structured to be practical, honest about limitations, and directly relevant to the roles learners already occupy or are working towards.

Supply Chain

Supply chains have become one of the most scrutinised and strategically important parts of any business. Our Supply Chain courses cover the full breadth of the field: from strategy and sourcing to digital visibility, predictive analytics, automation, e-commerce, and sustainability. The approach is grounded in how supply chains actually operate across global and local contexts, with attention to risk, resilience, and the growing pressure to align operations with environmental and social commitments



Leaders Path is designed for those building careers that leave a mark on the world.

Our Courses Are For ...

Anyone who wants to stay relevant, grow faster and make better decisions in a changing world.

Building their foundation :

Early-career professionals who want to develop strong, future-focused skills in Artificial Intelligence, Sustainability, and Supply Chain.

Stepping into larger roles :

Mid-career professionals and managers who are ready to move beyond daily execution and take on more strategic responsibilities.

Leading teams & decisions :

Senior professionals and leaders who want to stay updated, think ahead, and lead with clarity in a rapidly evolving business environment.

Creating & growing businesses :

Entrepreneurs and business owners who want to build smarter, more efficient, and sustainable organisations.

Advising & influencing others :

Consultants and professionals who want deeper knowledge to offer better insights and solutions.

Planning for the future :

Professionals in finance, policy, and risk who need to understand how AI, sustainability, and global supply chains are shaping decisions.

Exploring new directions :

Career switchers and lifelong learners who want to enter high-growth, future-focused fields with confidence.



**If your work involves decisions, growth, or strategy
Leaders Path will help you do it better.**

The Learning Experience ...



Each course follows a structured weekly rhythm, organised into carefully sequenced modules. Learners begin by working through recorded sessions on the LMS and then bring that preparation into live sessions with industry experts. They are focused conversations, where learners ask questions, test their thinking, and understand how concepts are applied in real organisations.

The curriculum is deliberately designed to build progressively, with each module strengthening what came before. Learning moves steadily from understanding concepts to applying them with confidence in real contexts, encouraging them to engage actively and think beyond theory.

Because the platform is fully online, it fits around a professional schedule. The focus is to ensure that every element the structure, expert engagement, and applied assessment works together to make the learning practical, relevant, and directly useful.

The measure of success is not how much you complete, but how confidently you can think, apply, and engage with real-world challenges.

10 Hours of Learning ;
2 Weeks Access from Purchase ;
Weekly Industry Sessions

**Targeted
Learning Path**

30 Hours of Learning ;
6 Weeks Access from Purchase ;
Weekly Industry Sessions

**Applied
Learning Path**

77 Hours of Learning ;
15 Weeks Access from Purchase ;
Weekly Industry Sessions ;
Academic Sessions: Fortnightly

**Integrated
Learning Path**

SUSTAINABILITY

Learn at your own pace
2 weeks | 6 weeks | 15 weeks



**Sustainability isn't a specialization anymore,
it's the foundation of how leaders think.**

Course Outline

Sustainability

Targeted Learning Path

Duration : 2 Weeks for each course

EM1: Climate Science for Decision Makers

- Core climate science concepts relevant to business decisions
- Interpreting climate data, scenarios and organisational risk
- Communicating climate insights to stakeholders effectively

EM2: Green Economy: From Policy

- How climate and sustainability policies shape economic outcomes
- Analysing policy implications for business strategy
- Navigating green economy policy transitions as a leader

EM3: Green, Transition, & Inclusive Economies

- Understanding pathways to economic transition and decarbonisation
- Balancing climate goals, growth and social inclusion
- Designing roadmaps that align profitability with sustainability

EM4: Sustainable & Regenerative Business Models

- Rethinking business models for long-term value creation
- Designing models that integrate profitability and environmental responsibility
- Appraising sustainability business cases using ESG and financial metrics

EM5: Energy Transition & Climate Technologies

- Key concepts in global energy transition and clean energy systems
- Evaluating energy transition options using financial and risk criteria
- Formulating strategic responses such as decarbonisation roadmaps

EM6: Circular Economy & Resource Productivity

- Designing systems that decouple growth from resource consumption
- Diagnosing linear value chains for material and energy leakages
- Redesigning products and supply chains using circular strategies

EM7: Social Sustainability, Human Rights & Just Transition

- Addressing human rights, equity and workforce transition
- Embedding social sustainability into governance and decision-making
- Leading inclusive transitions that are credible and resilient

EM8: Stakeholder Capitalism & Impact Measurement

- Understanding and operationalising stakeholder capitalism
- Designing impact measurement and reporting approaches
- Steering investment decisions toward sustainable outcomes

EM9: ESG Governance, Ethics & Board Accountability

- Embedding ESG into governance structures and board oversight
- Designing ESG dashboards and disclosures for decision-making
- Assessing and strengthening ESG governance effectiveness

EM10: Global Sustainability Regulations & Liability

- Navigating global and Indian ESG regulatory requirements
- Assessing legal and compliance risks in sustainability disclosures
- Advising leadership on risk-aware sustainability strategies

EM11: ESG Frameworks & Disclosure Architecture

- Understanding ESG disclosure structures and regulatory drivers
- Designing integrated ESG reporting systems aligned to strategy
- Evaluating disclosure quality using materiality and assurance criteria

EM12: Carbon Accounting & Net Zero Pathways

- Calculating organisational carbon footprints across Scope 1, 2 and 3
- Designing realistic net zero pathways with interim targets
- Validating net zero strategies against SBTi and regulatory expectations

EM13: ESG Metrics, Data Systems & Digital Tools

- Building reliable ESG data systems for reporting and compliance
- Assessing data systems for gaps in scalability and auditability
- Implementing ESG data governance aligned with stakeholder needs

EM14: ESG Reporting Assurance & Audit Readiness

- Preparing ESG disclosures for independent assurance
- Assessing disclosure readiness across data quality and internal controls
- Leading teams to deliver credible, scrutiny-resistant ESG communications



Sustainability

Applied Learning Path

Duration : 6 Weeks for each course

B3: Digital Trust & Governance

- Responsible AI, Governance & Accountability
- Data Judgment & Information Integrity
- ESG Governance, Ethics and Board Accountability



At Leaders Path, sustainability isn't a topic. It's the lens through which better decisions are made

B5: Climate & Energy Transition

- Climate Science for Decision Makers
- Energy Transition and Climate Technologies
- Carbon Accounting and Net Zero Pathways

B6: ESG Intelligence

- ESG Frameworks and Disclosure Architecture
- ESG Metrics, Data Systems & Digital Tools
- ESG Reporting Assurance & Audit Readiness

B7: Circular Economy & Stakeholder Impact

- Sustainable and Regenerative Business Models
- Circular Economy and Resource Productivity
- Stakeholder Capitalism and Impact Measurement



Blaze your trail so bright that others find their courage in your light.

B8: Ethics, Rights & ESG

- Social Sustainability, Human Rights and Just Transition
- Global Sustainability Regulations & Liability
- ESG Governance, Ethics and Board Accountability

B10: Sustainable Supply Chain & ESG

- Sustainable Supply Chain Decisions
- Carbon Accounting and Net Zero Pathways
- ESG Metrics, Data Systems & Digital Tools



Sustainability

Integrated Learning Path

Duration : 15 Weeks for each course

P3: Responsible AI, ESG & Governance

- Responsible AI deployment, data judgment, and information integrity
- ESG governance, ethics, board accountability, and global sustainability regulations
- Stakeholder capitalism, ESG frameworks, disclosure architecture, and audit readiness

P4: Climate, Carbon & Energy Transition

- Climate science for decision-making, energy transition pathways, and climate technologies
- Carbon accounting across Scope 1, 2 and 3, net zero pathway design, and SBTi validation
- ESG data systems, digital tools, ESG disclosure architecture, and sustainable business models

P5: ESG Strategy, Reporting & Assurance

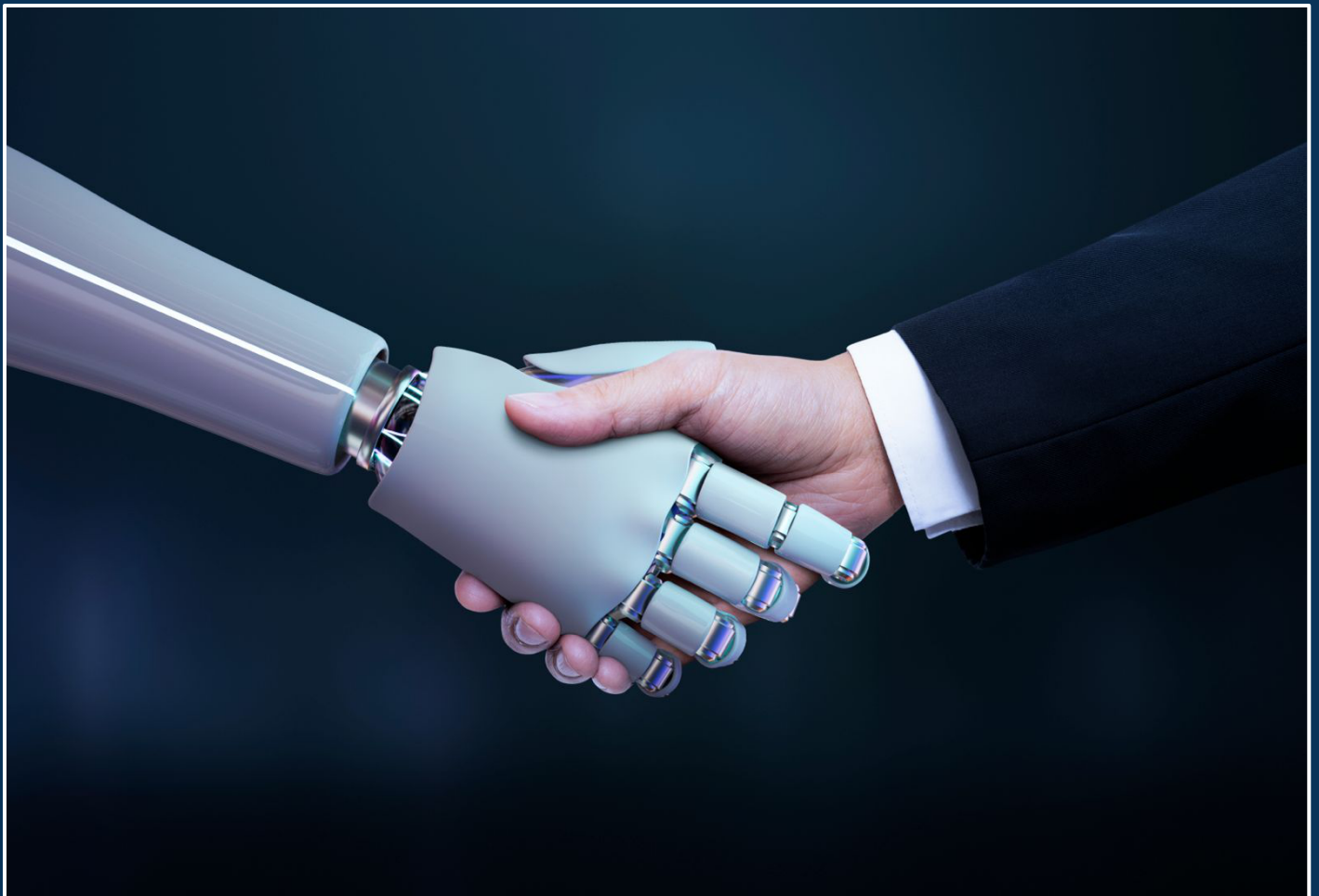
- Stakeholder capitalism, ESG governance, ethics, and board-level accountability
- ESG frameworks, disclosure architecture, data systems, and digital reporting tools
- Carbon accounting, net zero pathways, assurance standards, and audit readiness

P7: Sustainable & Net Zero Supply Chain

- Sustainable sourcing, ESG integration into procurement and logistics decisions
- Carbon accounting, net zero pathway design, and ESG metrics for supply chain reporting
- Sustainable and regenerative business models, supply chain risk, and resilience planning

ARTIFICIAL INTELLIGENCE

Learn at your own pace
2 weeks | 6 weeks | 15 weeks



**AI doesn't replace human thinking.
It amplifies it. We teach you how.**

Course Outline

Artificial Intelligence

Targeted Learning Path

Duration : 2 Weeks for each course

AM1: Foundations of AI & Generative Systems

- Core concepts, capabilities and limitations of modern AI
- Interpreting AI-generated outputs critically
- Applying AI tools while maintaining human accountability

AM2: Human-AI Interaction & Intelligent Prompting

- Prompting as a thinking and problem framing skill
- Designing structured human-AI interaction workflows
- Recognizing limitations, bias and responsibility in AI use

AM3: AI Tools for Professional Productivity

- Identifying where AI genuinely saves time
- Maintaining quality and judgment in AI-assisted work
- Designing personal workflows for sustained productivity

AM4: Cognitive Leverage & AI-Augmented Thinking

- Using AI to extend thinking, not replace it
- Recognising and managing over-reliance on AI
- Preserving independent reasoning and problem-solving

AM5: Human–AI System & Workflow Design

- Designing work flows where humans and AI work together
- Identifying risks when introducing AI into existing processes
- Scaling and governing human–AI systems responsibly

AM6: Responsible AI, Governance & Accountability

- Evaluating AI use against ethical and organisational standards
- Designing governance mechanisms for AI deployment
- Monitoring AI systems and knowing when to intervene

AM7: Decision Intelligence Foundations

- Structuring business decisions clearly and systematically
- Combining data, models and judgment effectively
- Selecting analytical tools appropriate to the decision

AM8: Data Judgment & Information Integrity

- Questioning data sources, assumptions and model outputs
- Evaluating reliability and relevance before acting on data
- Making decisions that acknowledge uncertainty and limitations

AM9: Decision Narratives & Insight Communication

- Translating analysis into clear, decision-oriented narratives
- Distinguishing AI-generated content from original thinking
- Taking ownership and responsibility for final outputs

AM10: Analytical Querying & Problem Decomposition

- Asking the right analytical questions before building models
- Decomposing complex problems into structured components
- Staying actively engaged and accountable in AI-enabled work

AM11: Advanced Analytical Reasoning & Validation

- Validating and challenging analytical conclusions
- Defending decisions under uncertainty and incomplete data
- Identifying where analysis fails at senior decision-making levels

AM12: Business Intelligence as a Decision System

- Repositioning BI from reporting tools to decision support
- Distinguishing signal from noise in business data
- Using BI insights to justify and communicate decisions

AM13: Strategic Insight Storytelling

- Using insights to influence strategy, not just explain performance
- Structuring and delivering strategic narratives effectively
- Balancing BI interpretation with BI building skills

AM14: AI-Era Leadership, Projects & Change

- Leading AI-enabled change across people, processes and culture
- Managing AI projects and transformation initiatives
- Building future-ready organisations through responsible AI adoption

ARTIFICIAL INTELLIGENCE



Artificial Intelligence

Applied Learning Path

Duration : 6 Weeks for each course

B1: Intelligent Decision System

- Decision Intelligence Foundations
- Analytical Querying & Problem Decomposition
- Business Intelligence as a Decision System

B2: Gen AI for Business Productivity & Workflow Design

- Foundations of AI & Generative Systems
- Human–AI Interaction & Intelligent Prompting
- Human–AI System & Workflow Design

B3: Digital Trust & Governance

- Responsible AI, Governance & Accountability
- Data Judgment & Information Integrity
- ESG Governance, Ethics and Board Accountability

B4: AI Driven Strategic Insight & Executive Communication

- Decision Narratives & Insight Communication
- Strategic Insight Storytelling
- AI-Era Leadership, Projects & Change

Artificial Intelligence

Integrated Learning Path

Duration : 15 Weeks for each course

P1: Advanced AI & Decision Intelligence

- Foundations of AI and generative systems, human–AI interaction, and intelligent prompting
- Decision intelligence, analytical querying, and advanced reasoning under uncertainty
- Business intelligence as a decision system, insight communication, and data judgment

P2: Gen AI for Business Transformation & Leadership

- Foundations of generative AI, cognitive leverage, and AI-augmented thinking
- Designing human–AI workflows, responsible governance, and accountability frameworks
- AI-era leadership, strategic insight storytelling, and managing AI-enabled change

P3: Responsible AI, ESG & Governance

- Responsible AI deployment, data judgment, and information integrity
- ESG governance, ethics, board accountability, and global sustainability regulations
- Stakeholder capitalism, ESG frameworks, disclosure architecture, and audit readiness



**Don't inherit someone else's direction.
Build your own.**

SUPPLY CHAIN

Learn at your own pace
2 weeks | 6 weeks | 15 weeks



**From disruption to design -
this is supply chain thinking in practice.**

Course Outline

Supply Chain

Targeted Learning Path
Duration : 2 Weeks for each course

SM1: Supply Chain Strategy & Design

- Aligning supply chain strategy with overall business objectives
- Designing end-to-end supply chain strategies across network, sourcing and logistics
- Evaluating strategic options using cost, service, risk and sustainability criteria

SM2: Strategic Sourcing & Supplier Management

- Building resilient, value-creating supplier relationships
- Evaluating sourcing options using cost, risk and strategic value
- Making sourcing decisions that balance short-term cost and long-term partnership

SM3: Inventory Management & Service Levels

- Identifying where AI genuinely saves time
- Maintaining quality and judgment in AI-assisted work
- Designing personal workflows for sustained productivity

SM4: Logistics & Distribution

- Designing logistics networks for speed, cost and reliability
- Evaluating transport options using cost, time and sustainability criteria
- Optimising distribution strategies across modes and markets

SM5: Warehouse Management Systems

- Understanding how WMS enables operational performance
- Configuring WMS rules for location management and task sequencing
- Evaluating WMS performance metrics and recommending improvements

SM6: Global Supply Chain Infrastructure

- Designing supply chains across borders and geopolitical contexts
- Analysing infrastructure options across trade lanes and product types
- Evaluating infrastructure investments against strategic and economic factors

SM7: Operations Excellence for Changemakers

- Applying lean and six sigma principles to real operations scenarios
- Identifying waste, variation and bottlenecks in existing processes
- Leading operations transformation initiatives for sustainable improvement

SM8: Digital Supply Chain & Real-Time Visibility & Impact Measurement

- Designing real-time visibility systems across the supply chain
- Applying digital tools and dashboards to monitor performance
- Building roadmaps for digitalising supply chain processes

SM9: Predictive Analytics for Supply Chains

- Using predictive models to anticipate demand, risk and performance
- Applying regression, time-series and classification models to supply chain problems
- Translating predictive insights into concrete supply chain decisions

SM10: Sustainable Supply Chain Decisions

- Integrating ESG criteria into sourcing, procurement and logistics
- Analysing sustainability trade-offs across cost, service and environmental impact
- Designing recommendations that balance commercial and sustainability goals

SM11: Managing Risks in a Global Supply Chain

- Identifying and classifying supply chain risks across suppliers and geopolitics
- Designing mitigation strategies and contingency plans
- Leading cross-functional discussions on risk response and resilience

SM12: Supply Chain for E-Commerce & Q-Commerce

- Designing high-velocity supply chains for e-commerce business models
- Managing last-mile delivery and fulfilment for speed and scale
- Leading scalable e-commerce operations across channels

SM13: Supply Chain Automation & Robotics

- Evaluating automation and robotics initiatives without technology-first bias
- Deploying AI agents for scheduling, vendor negotiation and exception handling
- Governing human-robot operations for resilience and performance

SM14: Supply Chain Resilience

- Moving from reactive disruption management to proactive resilience design
- Designing supply chain structures that withstand and adapt to shocks
- Integrating resilience principles into strategic and operational planning



Supply Chain

Applied Learning Path

Duration : 6 Weeks for each course

B9: Supply Chain Intelligence & Risk

- Digital Supply Chain & Real-Time Visibility
- Predictive Analytics for Supply Chains
- Managing Risks in a Global Supply Chain

B10: Sustainable Supply Chain & ESG

- Sustainable Supply Chain Decisions
- Carbon Accounting and Net Zero Pathways
- ESG Metrics, Data Systems & Digital Tools

B11: Global Supply Chain Strategy & Resilience

- Supply Chain Strategy & Design
- Global Supply Chain Infrastructure
- Supply Chain Resilience

B12: E-Commerce & Automated Supply Chain

- Supply Chain for E-Commerce and Q-Commerce
- Supply Chain Automation & Robotics
- Warehouse Management Systems

Supply Chain

Integrated Learning Path

Duration : 15 Weeks for each course

P6: Global Supply Chain Strategy & Digital Transformation

- Supply chain strategy and design, global infrastructure, and cross-border network configuration
- Digital supply chain visibility, predictive analytics, and real-time performance monitoring
- Risk management, supply chain resilience, and operations excellence



A title tells you where someone sits. How they think tells you who they are.

P7: Sustainable & Net Zero Supply Chain

- Sustainable sourcing, ESG integration into procurement and logistics decisions
- Carbon accounting, net zero pathway design, and ESG metrics for supply chain reporting
- Sustainable and regenerative business models, supply chain risk, and resilience planning

P8: E-Commerce, Automation & Smart Logistics

- High-velocity supply chain design for e-commerce and quick commerce operations
- Logistics and distribution network design, warehouse management systems, and WMS configuration
- Supply chain automation, robotics, AI agent deployment, digital visibility, and predictive analytics

The People Behind Our Courses

Our instructors come from respected global organisations and institutions across AI, Sustainability, and Supply Chain. They bring firsthand experience of how these fields operate in practice — not just theoretical knowledge. Learners hear directly from people who have worked through the same kinds of decisions and challenges the programs are built around.



Methodology and Assessment

Each course follows a structured weekly rhythm that balances independent study with guided engagement. Learners work through recorded modules at their own pace and then bring that preparation into live virtual sessions with industry experts. These sessions are focused and interactive — learners can ask questions, work through real scenarios, and hear directly from experts operating in the field.

Assessment is built around application, not recall. Rather than testing what a learner can remember, assessments present realistic situations that require judgment, analysis, and decision-making. Each learner is evaluated across six dimensions — Conceptual Understanding, Problem Framing, Application, Critical Thinking, Ethics and Responsibility, and Future Readiness — giving an honest and structured picture of where capability stands and where it has developed.

Throughout the course, learners are supported at every stage. The sequencing is deliberate, the feedback is constructive, and the connection between what is being learned and where it applies professionally is always made clear. By the time a learner completes the course, the methodology itself has built something that content alone cannot: the confidence to use what they know.

- ✓ Self-Paced Learning
- ✓ Live Virtual Sessions
- ✓ Industry Expert Engagement
- ✓ Real-World Scenarios
- ✓ Rubric-Based Assessments
- ✓ Progress Tracking
- ✓ Discussion Forum
- ✓ Placement Support



Beyond Online Learning

Our courses extend well beyond recorded modules and platform access. As a learner, you have live industry connect sessions built into every module not as optional extras, but as a core part of how the program is structured. These sessions bring in experts who are actively working in Sustainability, AI or Supply Chain, creating space for direct conversation, real-world context, and the kind of insight that structured content alone cannot provide.

The course also connects you with professionals from diverse industries and backgrounds — working individuals, decision-makers, and domain-focused people who bring their own experience into every discussion. That exchange of perspectives adds a dimension to the learning that no module can replicate on its own.

For learners thinking about career growth, Leaders Path provides pathways to share professional profiles with relevant industry contacts where appropriate. There are no guaranteed outcomes, but there is genuine intent to connect capable, committed learners with the professional world they are preparing to contribute to more fully.

- Live sessions with industry experts
- Real-world perspectives and domain-specific insights
- Direct interaction and Q&A opportunities
- Exposure to how concepts apply in practice
- Industry Connect built into every module
- Cross-industry peer engagement
- Collaborative discussions and shared learning
- Diverse professional perspectives
- Profile sharing with industry contacts
- Exposure to relevant career opportunities
- Meaningful professional connections





CERTIFICATE OF COMPLETION

This certificate is proudly presented to:

XYZ bnnmmkkooii

For Successfully completing the course titled

Abcg fghtu kolputy

Course Duration:

Certificate code:



Managing Partner ,
Leaders Path LLP

Being Part of the LEAP Community

Joining Leaders Path means becoming part of the LEAP community — a network of professionals who share a commitment to learning that goes beyond a certificate. LEAP is built around four principles: Lead with Purpose, Excel with Skill, Aspire without Limits and Progress with Impact. These principles shape how the community thinks, engages, and grows together — during the course and well after it ends.

1 Access to a growing network of professionals across industries, career stages, and geographies

2 Ongoing invitations to industry events, expert sessions and community discussions

3 Continued exposure to updates and developments in Sustainability, AI and Supply Chain

4 Shared conversations with professionals navigating similar challenges and decisions

5 Long-term relationships that support career growth, collaboration, and continued learning

6 A network that develops alongside you — not the one that ends when the course does

The Leaders Path Advantage

Outcomes, Not Just Content: Leaders Path assesses learners on demonstrated capability — through applied projects, real cases, and scenario-based assessments. The certificate reflects what a learner can do, not just what they attended.

Structured Engagement: Every course runs on a weekly rhythm of self-paced modules and live industry expert sessions. This structure drives better engagement, stronger learning, and higher completion.

Academic and Industry Blend: Courses combine academic faculty teaching with direct practitioner input. Learners get conceptual depth and industry relevance in the same learning experience.

Contextualised for the Market: Leaders Path incorporates market -specific cases and regulatory contexts alongside global frameworks. The learning applies locally and internationally.

Flexible Yet Structured Pathways: Three learning paths — Targeted, Applied, and Integrated allow individuals, organisations, and institutions to choose the depth and duration that fits their needs.

Designed for Institutional Partnerships: Leaders Path co-designs courses with institutions. White-label and co-brand options, flexible credentialing, and data alignment make it a genuine institutional partner, not a content platform.



THE HINDU

AI won't eliminate jobs, but it will eliminate the unskilled 💎

Forbes

Demand For Green Skills Outpacing What The Workforce Can Deliver—But There's Hope

THE ECONOMIC TIMES | Careers

Mid-career growth avenues in logistics: Exploring in-demand roles and skills



COLUMBIA SPS

School of Professional Studies

The Green Jobs Boom Continues

Supply chain roles have grown **22% year-over-year since 2020**, with no signs of slowing as companies prioritize supply chain resilience and digital transformation. The pandemic exposed

INDIA TODAY

86% Indian employees report workplace disruption, upskilling demand rises



**Learn it.
Lead it.
Own it.**

For more information, please contact us:

 <https://www.linkedin.com/company/leaders-path/>

 [leaderspath360](#)

 +91- 9355917003

 info@leaderspath360.com

 www.leaderspath360.com

